

ORDNANCE SURVEY

Revised January 1963  
Levelled 1959

Scale: 1:2500 or 25.344 inches to 1 mile

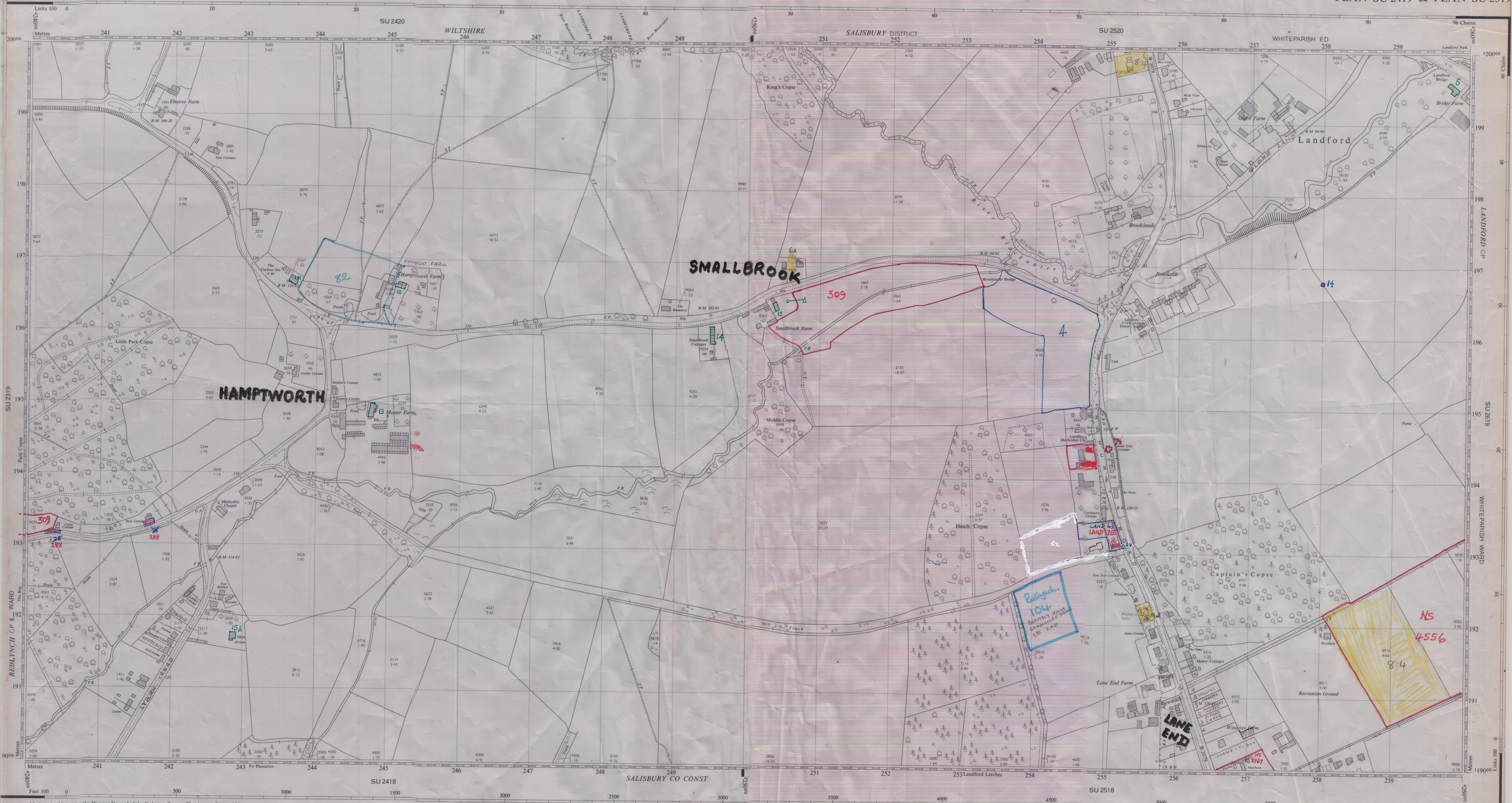
Revised January 1963  
Levelled 1959

The West half of this sheet is Plan SU 2419  
The East half of this sheet is Plan SU 2519

PLAN SU 2419 & PLAN SU 2519

PARCEL NUMBERS AND ACREAGES  
The number and acreage of each parcel of land is shown within the parcel. It is important when identifying a parcel to specify the number(s) of the plan(s) on which it falls.  
IN PARCELS DIVIDED BY THE SHEET EDGE, THE ACREAGES ARE SHOWN TO SHEET EDGE ONLY.

AN SU 2419 & PLAN SU 2519



Made and published by the Director General of the Ordnance Survey, Chessington, Surrey, 1964.  
Reconstituted from former CO 8873 Series plans and revised 1963.

© Crown Copyright 1964. Price 12/6 net.  
Rev. Mar. 1959

The West half of this sheet is Plan SU 2419  
The East half of this sheet is Plan SU 2519

PARCEL NUMBERS AND ACREAGES  
The number and acreage of each parcel of land is shown within the parcel. It is important when identifying a parcel to specify the number(s) of the plan(s) on which it falls.  
IN PARCELS DIVIDED BY THE SHEET EDGE, THE ACREAGES ARE SHOWN TO SHEET EDGE ONLY.

AN SU 2419 & PLAN SU 2519

PLAN SU 2419 & PLAN SU 2519

- Antiquities: *alter of*
- Change of boundary marking: *alter of*
- Limit of area within which the acreages of individual parcels are not shown: *alter of*
- Antiquities: *alter of*
- Bench Mark: *alter of*
- Parcels joined for acreages: *alter of*
- Leveling Information: *alter of*
- Alignment of Bench Marks and Surface Levels are given in feet above the Newlyn Datum.
- Bench Mark Lists, containing fuller and possibly later leveling information, are obtainable from the Director General, Ordnance Survey.
- Boundary Marking Abbreviations: *alter of*
- Centre of Old Course of Stream: *alter of*
- Centre of Road, etc.: *alter of*
- Centre of Canal, etc.: *alter of*
- Centre of Drain, etc.: *alter of*
- Centre of Covered Stream: *alter of*
- Face of Wall: *alter of*
- Side of River, etc.: *alter of*
- Track of Stream: *alter of*
- Track of Stream: *alter of*
- Defend, Underland: *alter of*
- Surface Level: *alter of*
- Revision Point or Traverse Station: *alter of*
- Triangulation Station: *alter of*
- Face of Wall: *alter of*
- Side of River, etc.: *alter of*
- Track of Stream: *alter of*
- Track of Stream: *alter of*
- Defend, Underland: *alter of*

REFERENCE  
For fuller information see Reference Grid published separately.

NATIONAL GRID REFERENCE  
The lines on the plan form part of the National Grid and are spaced at 100 metre intervals. To give a large scale reference defining the position of a point to the nearest 10 metres proceed as follows:

EXAMPLE: H 11 Heath Copse

EASTING	NORTHING
Take west edge of square in which point lies and read the figures opposite this line on NORTH and SOUTH margins	Take south edge of square in which point lies and read the figures opposite this line on EAST and WEST margins
Estimate tens of metres from the grid line	Estimate tens of metres from the grid line
252	193
2529	1933

TEN METRE REFERENCE: SU 25291933

For further information see "The Projection for Ordnance Survey Maps and Plans and the National Reference System". The representation on this plan of a road, track or footpath is no evidence of the existence of a right of way. 1 square inch on this plan represents 1/2500 of an acre on the ground. The statement of amount here given is approximate.

- Beer House: *alter of*
- Bench Mark: *alter of*
- Boundary Post: *alter of*
- Boundary Stone: *alter of*
- Cart Track: *alter of*
- Drinking Fountain: *alter of*
- Electricity Pillar, Post or Pylon: *alter of*
- Fire Alarm Pillar: *alter of*
- Flagstaff: *alter of*
- Foot Bridge: *alter of*
- Fountain: *alter of*
- Fundamental Bench Mark: *alter of*
- High or Low Water Mark of Medium Tides: *alter of*
- Guide Post: *alter of*
- Letter Box: *alter of*
- Level Crossing: *alter of*
- Mile or Measuring Post: *alter of*
- Mile Stone: *alter of*
- Pillar, Pole, Post or Pylon: *alter of*
- Police Call Box: *alter of*
- Post Office: *alter of*
- Public House: *alter of*
- Pump: *alter of*
- Revision Point: *alter of*
- Signal Box: *alter of*
- Signal Bridge: *alter of*
- Signal Post: *alter of*
- Spring: *alter of*
- Stone: *alter of*
- Stone: *alter of*
- Tank or Track: *alter of*
- Telephone Call Box: *alter of*
- Traverse Station: *alter of*
- Water Point: *alter of*
- Water Tap: *alter of*
- Weightbridge: *alter of*
- Well: *alter of*
- Wind Pump: *alter of*
- High or Low Water Mark of Ordinary Spring Tides: *alter of*
- High or Low Water Mark of Medium Tides: *alter of*