

ORDNANCE SURVEY

PLAN SU 2223 & PLAN SU 2323

PARCEL NUMBERS AND ACREAGES
The number and acreage of each parcel of land is shown within the parcel. It is important when identifying a parcel to specify the number(s) of the plan(s) on which it falls.
IN PARCELS DIVIDED BY THE SHEET EDGE, THE ACREAGES ARE SHOWN TO SHEET EDGE ONLY.

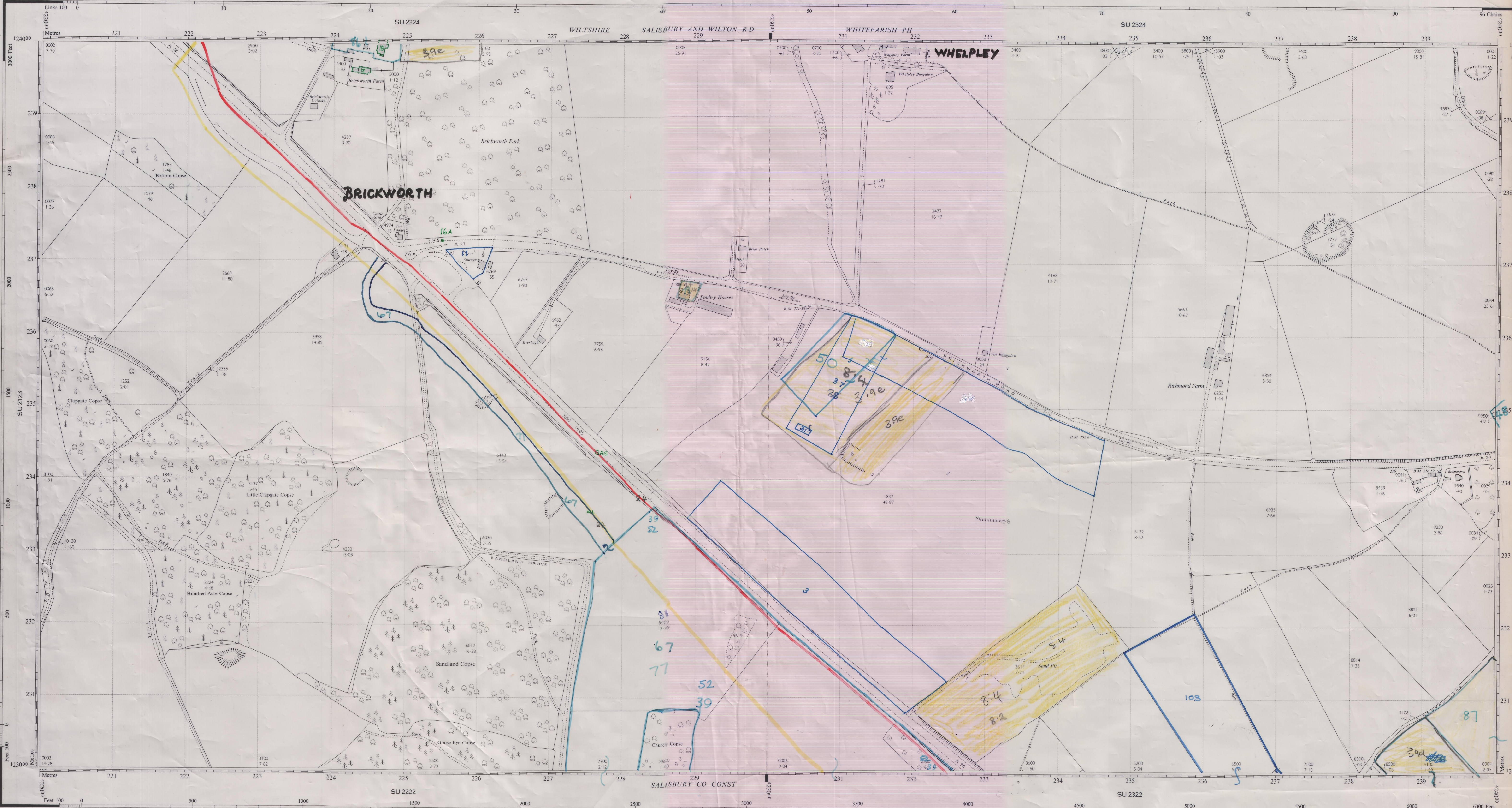
Revised July 1965
Levelled 1959

Scale: 1:2500 or 25.344 inches to 1 mile

Revised May 1965
Levelled 1958.59

The West half of this sheet is Plan SU 2223
The East half of this sheet is Plan SU 2323

PLAN SU 2223 & PLAN SU 2323



Made and published by the Director General of the Ordnance Survey, Chesington, Surrey, 1966.
Reconstituted from former County Series plans and revised 1965.

© Crown Copyright 1966.

The West half of this sheet is Plan SU 2223
The East half of this sheet is Plan SU 2323

Antiquities (filled or unfilled)	Bench Mark	Surface Level
Change of boundary merging	" Fundamental	Revision Point or Traverse Station
Limit of area within which the acreages of individual parcels are not shown	Parcels joined for acreages	Trangulation Station
Levelling Information		
Altitudes of Bench Marks and Surface Levels are given in feet above the Newlyn Datum.		
Bench Mark lists, containing fuller and possibly later levelling information, are obtainable from the Director General, Ordnance Survey.		
Boundary Marking Abbreviations		
Base of Bank	Centre of Old Course of Stream	Face of Wall
Centre of Bank	Centre of Road, etc.	Side of River, etc.
Centre of Canal, etc.	Centre of Stream	Track of Hedge
Centre of Drain, etc.	4 feet from Base of Hedge	Track of Stream
Centre of Covered Stream	Face of Fence	Detached, Undefined

REFERENCE

For fuller information see Reference Card published separately.

NATIONAL GRID REFERENCE

The lines on the plan form part of the National Grid and are spaced at 100 metre intervals.

To give a large scale reference defining the position of a point to the nearest 10 metres proceed as follows—

EXAMPLE R in Richmond Farm	
EASTING	NORTHING
Take west edge of square in which point lies and read the figures opposite this line on NORTH and SOUTH margins	Take south edge of square in which point lies and read the figures opposite this line on EAST and WEST margins
Estimate tens of metres from the grid line	Estimate tens of metres from the grid line
235	235
2355	2353

TEN METRE REFERENCE: SU 2352353

For further information see "The Projection for Ordnance Survey Maps and Plans and the National Reference System".
The representation on this plan of a road, track or path is no evidence of the existence of a right of way.
A square inch on this plan represents 900 of an acre on the ground.
The statement of area is approximate.

Barr House	BM	Guide Post	GP	Revision Point	RP
Bench Mark	BM	Letter Box	LB	Signal Box or Post	SB, SP
Boundary Post	BP	Level Crossing	LC	Signal Bridge	SBP
Boundary Stone	BS	Loading Gauge	LG	Spring	SP
Capitulum	Ca	Mail Pickup	MPL	Stone	St
Cran	C	Mile or Mooring Post	MP	Sundial	SD
Drinking Fountain	DFn	Mile Stone	MS	Tank or Truck	Tk
Electricity Pillar or Post	EIP	Pillar, Pole or Post	P	Telephone Call Box	TCB
Electricity Transmission Line	ETL	Police Call Box	PCB	Traverse Station	TS
Fire Alarm Pillar	FAP	Police Telephone Pillar	PTP	Water Point, or Tap	WP, WPT, W/T
Flagstaff	FS	Post Office	PO	Weightbridge	WB
Foot Bridge	FB	Public House	PH	Well	W
Fundamental Bench Mark	FBM	Pump	P	Wind Pump	WP
Mean High or Low Water	MHW or MLW	Mean High or Low Water Springs	MHS or MLS		

PARCEL NUMBERS AND ACREAGES
The number and acreage of each parcel of land is shown within the parcel. It is important when identifying a parcel to specify the number(s) of the plan(s) on which it falls.
IN PARCELS DIVIDED BY THE SHEET EDGE, THE ACREAGES ARE SHOWN TO SHEET EDGE ONLY.

PLAN SU 2223 & PLAN SU 2323

PLAN SU 2223 & PLAN SU 2323