

PARCEL NUMBERS AND ACREAGES
The number and acreage of each parcel of land is shown within the parcel. It is important when identifying a parcel to specify the number(s) of the plan(s) on which it falls.
IN PARCELS DIVIDED BY THE SHEET EDGE, THE ACREAGES ARE SHOWN TO SHEET EDGE ONLY.

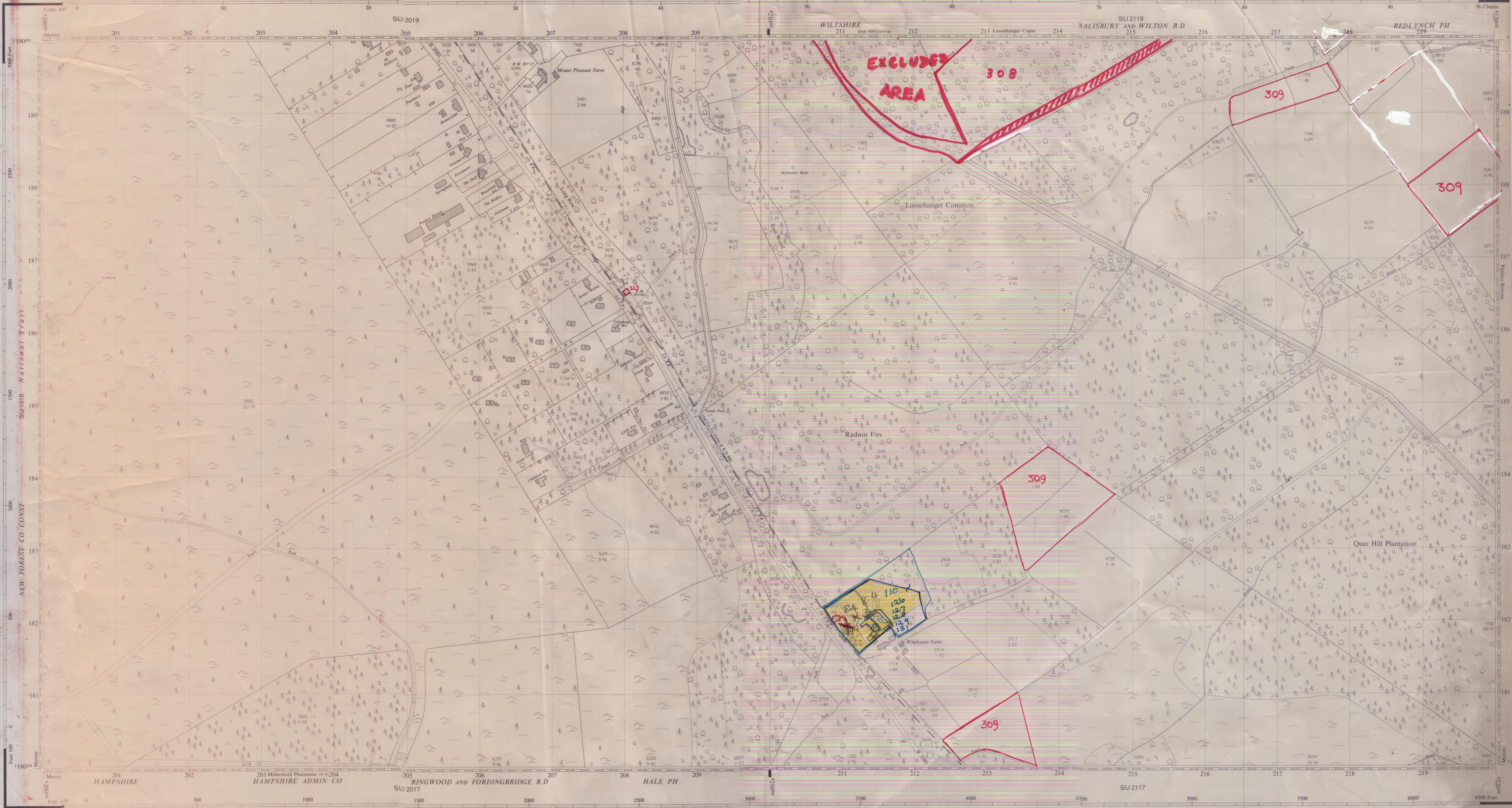
Revised April 1963
Levelled 1959

ORDNANCE SURVEY

Scale: 1:2500 or 25/344 inches to 1 mile

Revised April 1959
Levelled

The West half of this sheet is Plan SU 2018
The East half of this sheet is Plan SU 2118



Made and published by the Director General of the Ordnance Survey, Chessington, Surrey, 1964.
Reconstituted from former County Survey plans and revised 1963.

© Crown Copyright 1964.

The West half of this sheet is Plan SU 2018
The East half of this sheet is Plan SU 2118

REFERENCE

For fuller information see Reference Card published separately.

NATIONAL GRID REFERENCE

The lines on the plan form part of the National Grid and are spaced at 100 metre intervals.
To give a large scale reference defining the position of a point to the nearest 10 metres proceed as follows:-

EASTING	NORTHING
Take west edge of square in which point lies and read the figures opposite this line on NORTH and SOUTH margins.	Take south edge of square in which point lies and read the figures opposite this line on EAST and WEST margins.
Estimate tens of metres from the grid line.	Estimate tens of metres from the grid line.
EXAMPLE: N07 MAY'S FIRS	EXAMPLE: SU 20641856

For further information see "The Projection for Ordnance Survey Maps and Plans and the National Reference System".
The representation on this plan of a road, track or footpath is an evidence of the existence of a right of way.
1 square inch on this plan represents 1/2500 of an acre on the ground.
The alignment of canals where shown is approximate.

- Antiquities (site of)
- Change of boundary meaning
- Limit of area within which the acreages of individual parcels are not shown
- Leveling Information: Altitudes of Bench Marks and Surface Levels are given in feet above the Newlyn Datum. Bench Mark lists, containing fuller and possibly later leveling information, are obtainable from the Director General, Ordnance Survey.
- Boundary Meaning Abbreviations:
 - BB: Base of Bank
 - CB: Centre of Bank
 - CC: Centre of Canal, etc
 - CD: Centre of Drain, etc
 - CCS: Centre of Covered Stream
 - CS: Centre of Road
 - CR: Centre of Stream
 - CH: 4 feet from Road
 - CH: 4 feet from Hedge
 - FF: Face of Fence
 - FW: Face of Wall
 - SR: Side of River, etc
 - TH: Track of Hedge
 - TS: Track of Stream
 - UD: Defaced, Undefined

- Beer House
- Bench Mark
- Boundary Post
- Boundary Stone
- Capstone, Cairn
- Cart Track
- Drinking Fountain
- Electricity Pylon, Post or Pylon
- Fire Alarm Pillar
- Flagstaff
- Foot Bridge
- Footpath
- Fundamental Bench Mark
- High or Low Water Mark of Medium Tides
- High or Low Water Mark of Ordinary Spring Tides
- High or Low Water Mark of Ordinary Neap Tides
- Letter Box
- Level Crossing
- Mile, or Mooring Post
- Mid Stone
- Pillar, Pole, Post or Pylon
- Police Call Box
- Police Telephone Pillar
- Post Office
- Public House
- Pump
- Revision Point
- Signal Box
- Signal Bridge
- Signal Post
- Spring
- Stone
- Sundial
- Tank or Track
- Telephone Call Box
- Traverse Station
- Water Point
- Water Tap
- Wharfedale
- Well
- Wind Pump
- Windmill