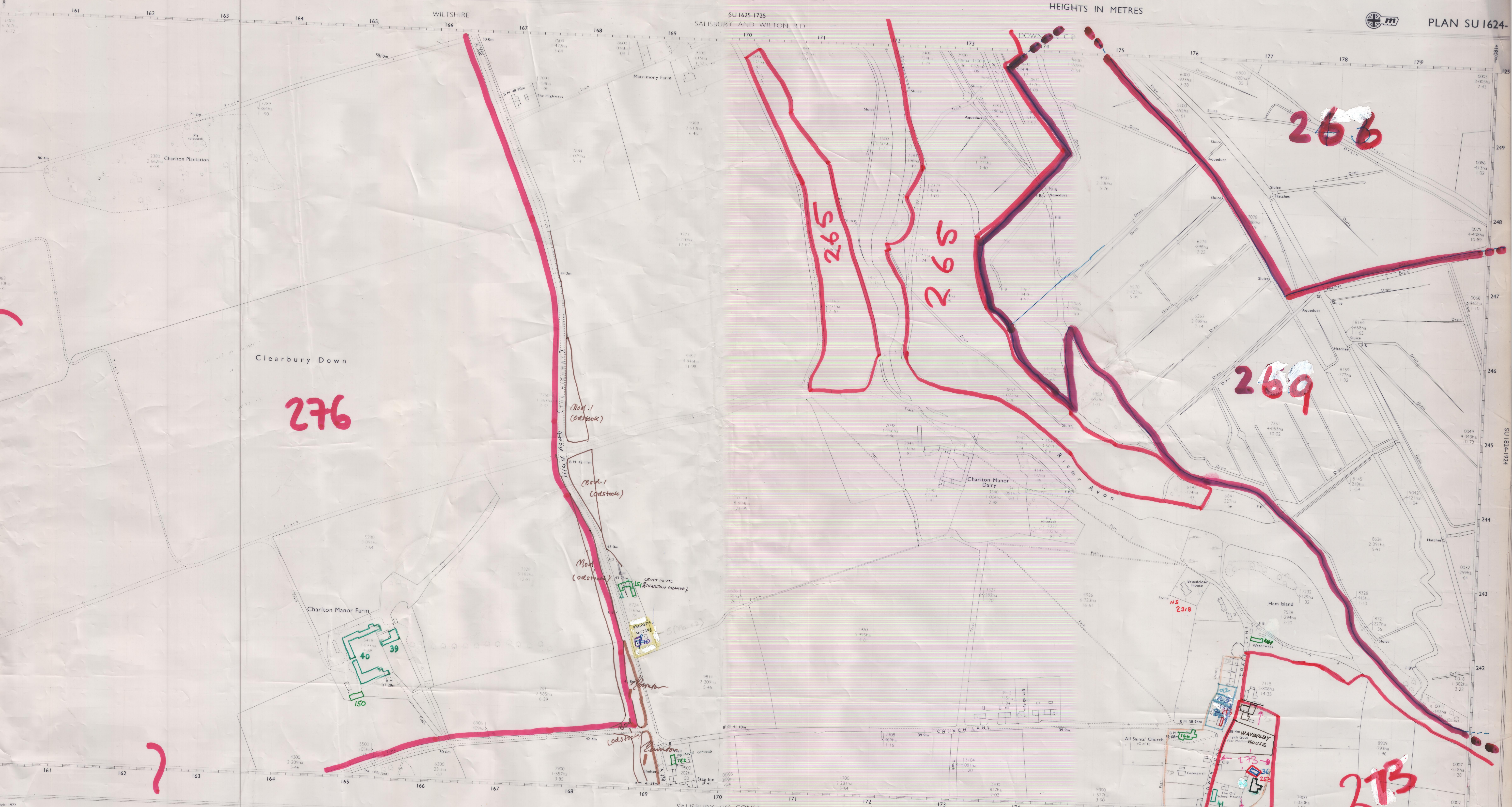


ORDNANCE SURVEY

HEIGHTS IN METRES



276

265

265

269

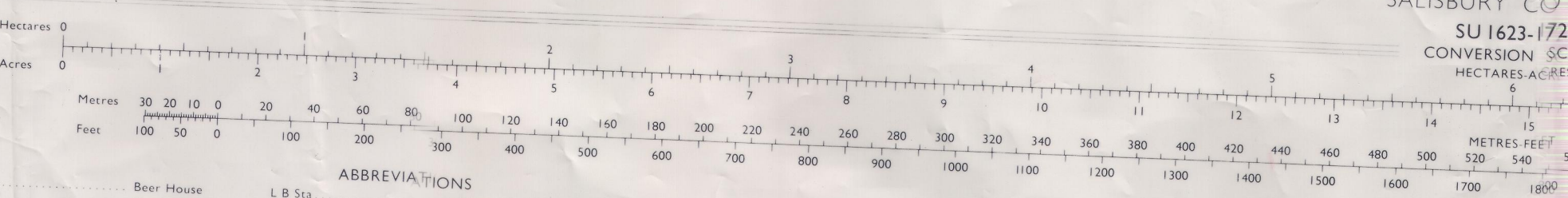
266

273

COMPILED DATA

Levelled 1952.57.59

Boundaries Nov 1971



ABBREVIATIONS	
B.H.	Bear House
B.M.	Bench Mark
B.P.	Boundary Post
B.S.	Boundary Stone
C.	Clane
C.H.	Club House
Ch.	Chimney
Ca.	Capstan
D.F.	Drinking Fountain
D.P.	Dock
D.L.	Electricity Pylon or Post
E.T.L.	Electricity Transmission Line
F.A.	Fire Alarm
F.B.	Fiber Bell Foot Bridge
F.P.	Filer Pole
F.S.	Fundamental Bench Mark
F.S.S.	Fog Station
G.P.	Guide Post
G.V.C.	Gas Valve Compartment
H.	Hydrant or Hydraulic
H.C.	Heath
H.B.	Heath Burn
H.P.	Hill Top
H.S.	Hay Stack
H.W.	High Water
H.W.S.	High Water Spring
M.H.W.S.	Mean High Water
M.L.W.S.	Mean Low Water
M.P.	Man or Moor
M.P.U.	Man or Post
N.T.L.	National Tidal Limit
N.T.S.	National Tidal Station
N.T.P.	National Tidal Post
P.C.	Public Convenience
P.H.	Police Call Box
P.O.	Public House
P.O.	Post Office
P.P.	Pump
P.T.P.	Police Telephone Pillar
R.	Road
R.H.	Road House
R.P.	Road Point
S.	Stone
S.B.	Signal Box
S.D.	Signal Bridge
S.L.	Sluice
S.P.	Signal Light
S.P.	Signal Post
S.S.	Signal Station
T.C.B.	Telephone Call Box
T.C.P.	Telephone Call Post
T.L.	Task on Track
T.P.	Telephone Pillar
T.S.	Traverse Station
W.	Well
W.B.	Water Bridge
W.P.	Wind Pump
W.P.	Works
W.P.	Water Post
W.P.	Water Point

SYMBOLS

[Symbol]	Slopes
[Symbol]	Cave Entrance
[Symbol]	Rock
[Symbol]	Boulders
[Symbol]	Stippled Masonry
[Symbol]	Gravel Building
[Symbol]	Gravelly
[Symbol]	Archway
[Symbol]	Change of boundary meaning
[Symbol]	Revision Point (Instrumentally Fixed)
[Symbol]	Region, Poles & Boundaries

BOUNDARIES

[Symbol]	County Boundary (geographical)
[Symbol]	County & Civil Parish Boundary (conterminous)
[Symbol]	County or County Borough Boundary
[Symbol]	London Borough Boundary
[Symbol]	County District Boundaries based on civil parish
[Symbol]	County District Boundaries based on civil parish
[Symbol]	County District Boundaries based on civil parish
[Symbol]	County District Boundaries based on civil parish
[Symbol]	County District Boundaries based on civil parish
[Symbol]	County District Boundaries based on civil parish
[Symbol]	County District Boundaries based on civil parish

AREAS

Area measurement is to plan edge only.

The number and area, in hectares (ha) and acres, is shown within each parcel of land.

EXAMPLE 1000m<sup>2</sup> parcel number 1000m<sup>2</sup> area in hectares 0.1000

When identifying a parcel it is important to specify the number of the plan on which it falls. Enclosures or features used for measurement of area. Limits of area within which individual parcels are not shown. To convert hectares to acres multiply by 2.47105. To convert acres to hectares multiply by 0.4047.

NATIONAL GRID REFERENCE

The grid lines form part of the National Grid and are at 100 metre intervals. To give a reference defining the position of a point to within 10 metres proceed as follows:

EXAMPLE 167 246

EASTING 167 NORTHING 246

Take west edge of 100 metre square in which point lies and read the figure opposite this line on the east or south margin. Estimate exact metres from grid line.