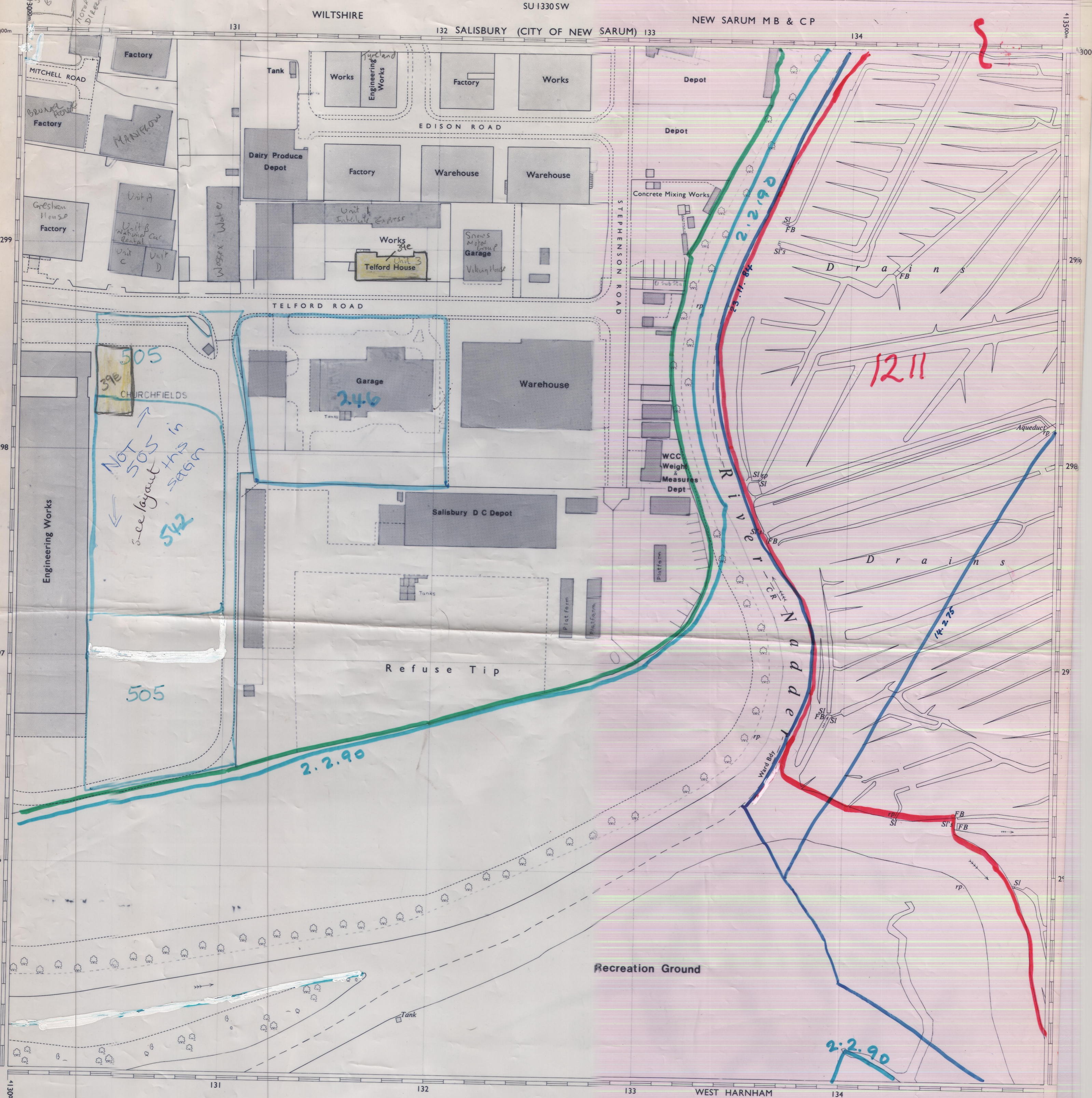


1329 NV



SALISBURY CO CONST SU 1329 SW

WEST HARNHAM ALL IN ADVT. CONT

Made and published by the Director General of the Ordnance Survey, Southampton. © Crown copyright, 1970.

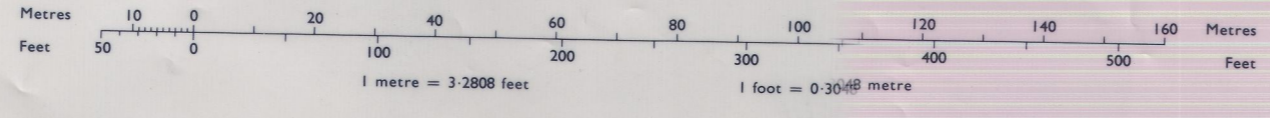
COMPILATION DATA

Levelled.....1958  
Boundaries.....Jan 1970

SYMBOLS

- Antiquity (site of)
- Change of boundary (merging)
- Culvert
- Direction of water flow
- Electricity Pylon
- Electricity Transmission Line
- Triangulation Station
- Traverse Station (permanent)
- Bench Mark
- Surface Level
- Revision Point (instrumentally fixed)
- Revision Point & Bench Mark coincident

CONVERSION SCALE: Metres-Feet



ABBREVIATIONS

- |                                    |                                  |                                      |                            |
|------------------------------------|----------------------------------|--------------------------------------|----------------------------|
| B.H. Beer House                    | F.Sta. Fire Station              | M.P.U. Mail Pick-up                  | S.Br. Signal Bridge        |
| B.M. Bench Mark                    | G.P.C. Guide Post                | M.S. Mile Stone                      | S.D. Sundial               |
| B.P. Boundary Post                 | G.V.C. Gas Valve Compound        | N.T. National Trust                  | S.L. Signal Light          |
| B.S. Boundary Stone                | H. Hydrant or Hydraulic          | N.T.L. (Normal) Tidal Limit          | S.L. Sluice                |
| C. Crane                           | L.B. Lector Box                  | N.T.S. National Trust (for Scotland) | S.P. Signal Post           |
| C.H. Club House                    | L.B.Sta. Lifeboat Station        | P. Pillar, Pole or Post              | S.Sta. Signal Station      |
| Chy. Chimney                       | L.C. Level Crossing              | P.C.B. Public Convenience            | T.C.B. Telephone Call Box  |
| Cn. Capstan                        | L.G. Loading Gauge               | P.C.B. Public Call Box               | T.C.P. Telephone Call Post |
| D.Fn. Drinking Fountain            | L.Ho. Lighthouse                 | P.H. Public House                    | Tk. Tank or Track          |
| ETL. Electricity Transmission Line | L.Twr. Lighting Tower            | P.O. Post Office                     | Tr. Trough                 |
| F.A. Fire Alarm                    | M. Metres                        | Pp. Pump                             | ts. Traverse Station       |
| F.A.P. Fire Alarm Pillar           | M.H.W. Mean High Water           | P.T.P. Police Telephone Pillar       | W. Well                    |
| F.B. Filter Bed, Foot Bridge       | M.H.W.S. Mean High Water Springs | R.H. Road House                      | W.B. Weighbridge           |
| F.B.M. Fundamental Bench Mark      | M.L.W. Mean Low Water            | rd. Road                             | Wd.Pp. Wind Pump           |
| F.S. Flagstaff                     | M.L.W.S. Mean Low Water Springs  | rp. Revision Point                   | Wr.Pt. Water Point         |
|                                    | M.P. Mile or Flooring Post       | S. Stone                             | W.T. Water Tap             |
|                                    |                                  | Sg. Signal Box                       |                            |

NATIONAL GRID REFERENCE

The grid lines form parts of the National Grid and are at 100 metre intervals. To give a reference defining the position of a point to within 10 metres proceed as follows—

EXAMPLE: T in TELFORD ROAD

EASTING	NORTHING
Take west edge of 100 metre square in which point lies and read the figures opposite this line on the north or south margin	Take south edge of 100 metre square in which point lies and read the figures opposite this line on the east or west margin
131	298
Estimate tens of metres from grid line to the point	Estimate tens of metres from grid line to the point
2	7
1312	2987

TEN METRE REFERENCE: SU 13122987

For further information see 'An Introduction to the Projection for Ordnance Survey Maps and the National Reference System.'

EXAMPLES OF BOUNDARY MERINGS

- |                                 |                             |                      |
|---------------------------------|-----------------------------|----------------------|
| B.B. Base of Bank               | C.S. Centre of Stream, etc. | S.R. Surface of Road |
| C.B. Centre of Bank             | Def. Defaced                | T.B. Top of Bank     |
| C.C.S. Centre of Covered Stream | E.K. Edge of Kerb           | Tk.H. Tank or Track  |
| C.D. Centre of Drain, etc.      | F.F.W. Face of Fence, Wall  | Tk.S. Tank or Track  |
| C.R. Centre of Road, etc.       | R.H. Root of Hedge          | Und. Under           |



Surveys of changes since the publication of this plan may be available. Enquiries should be addressed to the Director General or to the local Ordnance Survey office.

One grid square on this plan represents one hectare on the ground. To convert hectares to acres, multiply by 2.47105