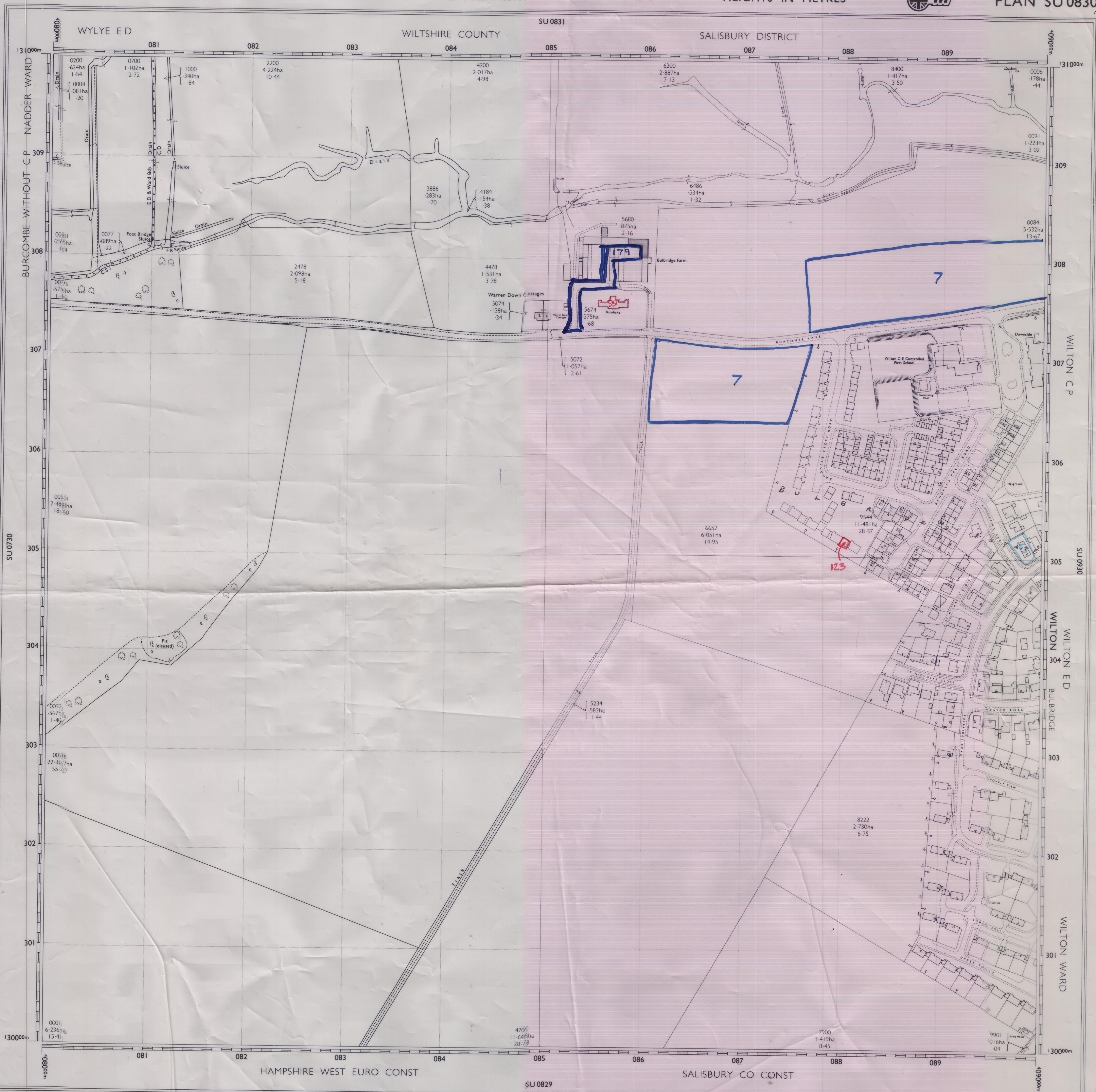


0830



© Crown copyright 1981

COMPILATION DATA

(a) Surveyed	1939
(b) Revisited	May 1980
(c) Revised	

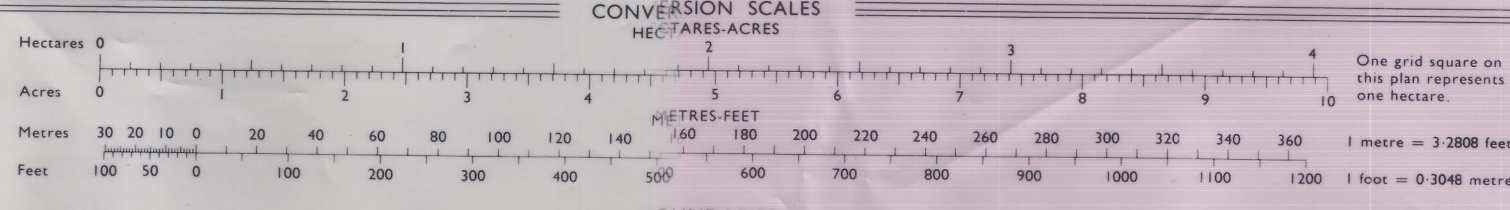
Levelled 1939  
Boundaries May 1980

Scale: 1:2500  
\* 1:1250 scale (photographically reduced)

Surveys changes since the publication of this plan may be available. Enquiries should be addressed to the Director General or to the local Ordnance Survey office.

Bench marks lists, which may contain later levelling information and particulars of bench marks to which heights have been shown, are obtainable from the Director General, Ordnance Survey.

PLAN SU0830



BOUNDARIES

ENGLAND & WALES	SCOTLAND
County	Region or Islands Area
District	District
London Borough	
Civil Parish (England)	
Community (Wales)	
Electoral Division	Electoral Division
Ward	Ward
Constituency (County, Borough or European Assembly)	Constituency (County, Borough or European Assembly)

Boundary markings

B.B. Base of Bank	C.R. Centre of Road, etc.	FF. Face of Fence	T.B. Top of Bank
C.B. Centre of Bank	C.S. Centre of Stream, etc.	FW. Face of Wall	Tk.H. Track of Hedge
C.C.S. Centre of Covered Stream	Def. Defaced	R.H. Root of Hedge	Tk.S. Track of Stream
C.D. Centre of Drain, etc.	E.K. Edge of Kerb	S.R. Side of River, etc.	Und. Undefined

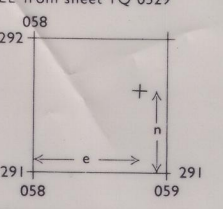
Made and published by the Director General of the Ordnance Survey, Southampton.

AREAS  
Area measurement is to plan edge only.  
The number and area, in hectares (ha) and acres, is shown within each parcel of land.

EXAMPLE:  
4267 parcel number  
1809ha area in hectares  
4.47 area in acres

NATIONAL GRID REFERENCE  
The grid lines form part of the National Grid and are at 100 metre intervals.

1. Take the two letters preceding the sheet number...  
2. Take the west edge of the grid square in which the point lies and read the figures opposite this line on the north or south margin...  
3. Take the south edge of the grid square in which the point lies and read the figures opposite this line on the east or west margin...  
4. The full six metre reference is given by writing first the letters, followed by the Easting and then by the Northing.



SU 0830